

Where next for Ireland's cities and towns?

John A Moran

Regional
Collaboration...

A new way
of planning...

Setting the
scene...

A culture
change...

21st Century
City...

RHH
INTERNATIONAL

**EUROPEAN
EXPO 2020**

Project Ireland 2040...

Project Ireland 2040

Climate change



1 million population increase by 2040.



75% of growth earmarked to take place outside Dublin and its suburbs with 25% in Dublin



Four regional cities are each expected to grow by 50%.



50:50 growth between the Eastern and Midlands region and the rest of Ireland.



Case Study (Mid-West)



Challenges

- From Q3'15 to Q3'19:
 - Rent for a 1 bed apartment in Limerick increased by 74% (an additional €4,700 per year)
 - For a 4 bed house it increased 67% or an additional €6,300 per year
- 4,500 additional full-time students in Limerick by 2024
- Mid-West Demographics increase by 2036:
 - 19 to 35, +20,000
 - Over 65s, +50,000
 - Over 85, +12,000
 - Aging population with increased life expectancy
 - 31.7% of the population over 65 years of age
- Social housing waiting list for Limerick is 50.2% single people



Opportunities

People moving to smaller cities for...

- Mid-West Labour Market
 - Employment up to 215,800 in Q4'19 from 188,400 in Q4'12
 - Unemployment down from 45,000 to 11,100
- Avg. Commuting time in Limerick is 24.2 minutes
 - Meath is 34.6 minutes
 - Dublin City is 28.9 minutes
- 2,450 new jobs announced in 2019 (Limerick)
- Highest disposable income per capita outside Dublin (Limerick)
- 1.3 million visits through Shannon Airport (January to September 2019)

Opportunities

- Mid-West Labour Market
 - Employment up to 215,800 in Q4'19 from 188,400 in Q4'12
 - Unemployment down from 45,000 to 11,100
- Avg. Commuting time in Limerick is 24.2 minutes
 - Meath is 34.6 minutes
 - Dublin City is 28.9 minutes
- 2,450 new jobs announced in 2019 (Limerick)
- Highest disposable income per capita outside Dublin (Limerick)
- 1.3 million visits through Shannon Airport (January to September 2019)

People moving to smaller cities for...

Quality of life,
opportunity,
affordability



Where next for Ireland's cities and towns?

John A Moran

Regional
Collaboration...

A new way
of planning...

Setting the
scene...

A culture
change...

21st Century
City...

RHH
INTERNATIONAL

**EUROPEAN
EXPO 2020**



Tri-region area...

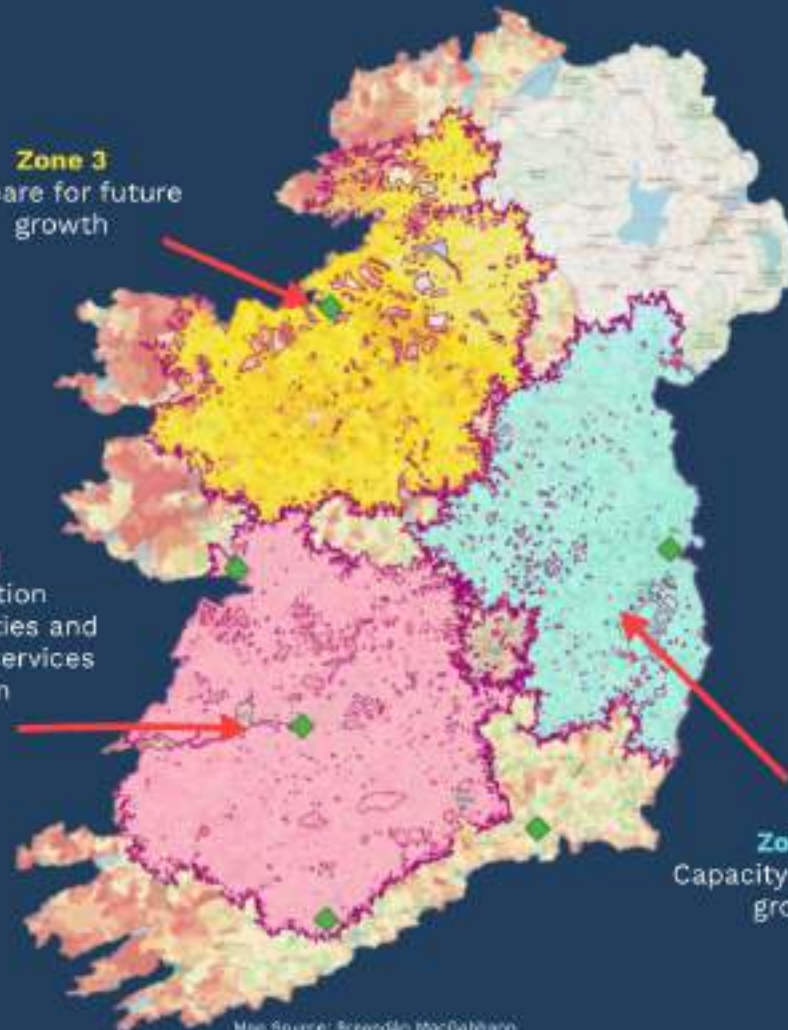
- Civil/public service + private sector flexibility
- Regional growth
- New centres of gravity for provision of services
- New neighbourhoods
- Equality in provision of public services
- Dublin quality improved



Zone 3
Prepare for future growth

Zone 1
Collaboration between 4 cities and provision of services for 1.3m

Zone 1
Capacity issues for growth



Map Source: Breandan MacCabháin

Where next for Ireland's cities and towns?

John A Moran

Regional
Collaboration...

A new way
of planning...

Setting the
scene...

A culture
change...

21st Century
City...

RHH
INTERNATIONAL

**EUROPEAN
EXPO 2020**

Culture change...



Culture change...



Increase density



Culture change...



Increase density



Increase home mix

Culture change...



Increase density



Transit Orientated
Development, Greener
& healthier travel



Increase home mix

Where next for Ireland's cities and towns?

John A Moran

Regional
Collaboration...

A new way
of planning...

Setting the
scene...

A culture
change...

21st Century
City...

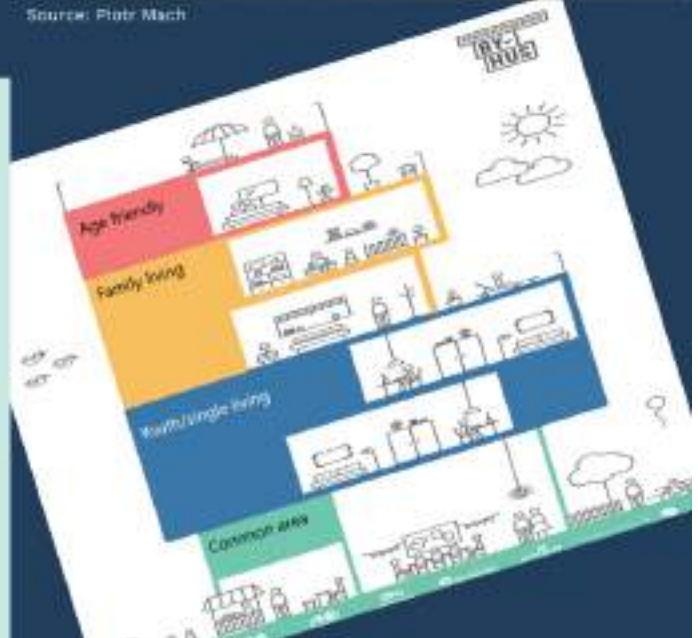
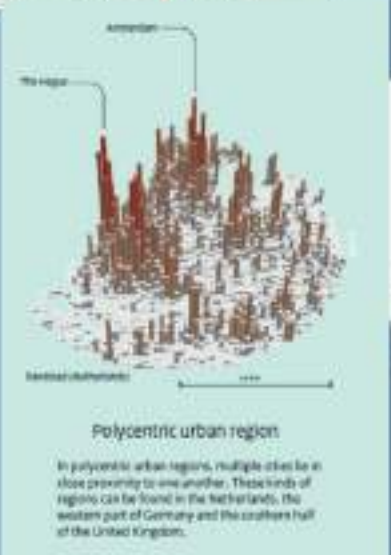
RHH
INTERNATIONAL

**EUROPEAN
EXPO 2020**

150,000 - 210,000 ADDITIONAL POPULATION
 BY 2030 (RESIDENCES / HA, 145,000-210,000)
 FORMERLY CITY CENTRE (RAILWAY STATION)



Source: Piotr Mach



LIMERICK 300,000 – 210,000 ADDITIONAL POPULATION
 DENSITY 150 RESIDENCES / Ha, 330 PEOPLE / Ha
 MINUTES CYCLING TIMES FROM CENTRE (RAILWAY STATION)



Newtown Pery

Superblock Concept Plan

-  Public Space
 -  Main Vehicular and Public Transport Routes
 -  Pedestrian Priority Cyclists Local and Emergency Access to
 -  Pedestrian Priority Shared Space
 -  Dedicated Cycle Lane
 -  Emergency Vehicles Local & Timed Access
-
-  Public Transport
 -  Through Traffic
 -  Heavy Traffic
 -  Emergency
 - 
 -  Local use

Newtown Pery

Superblock Concept Plan

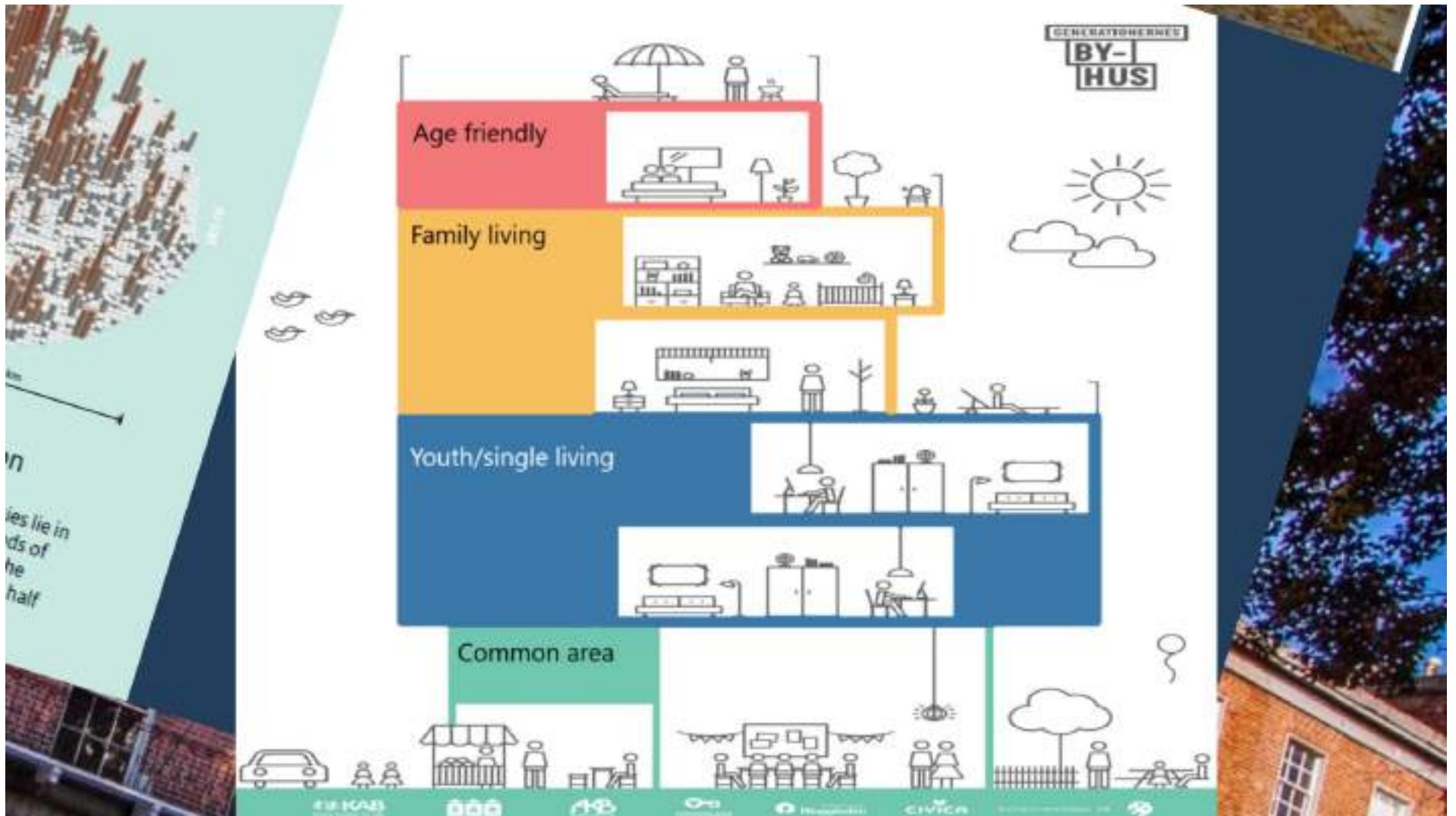
-  Public Space
-  Main Vehicular and Public Transport Route
-  Pedestrian Priority Cyclists Local and Emergency Access to traffic
-  Pedestrian Priority Shared Space
-  Dedicated Cycle Lane
-  Emergency Vehicles Local & Timed Access

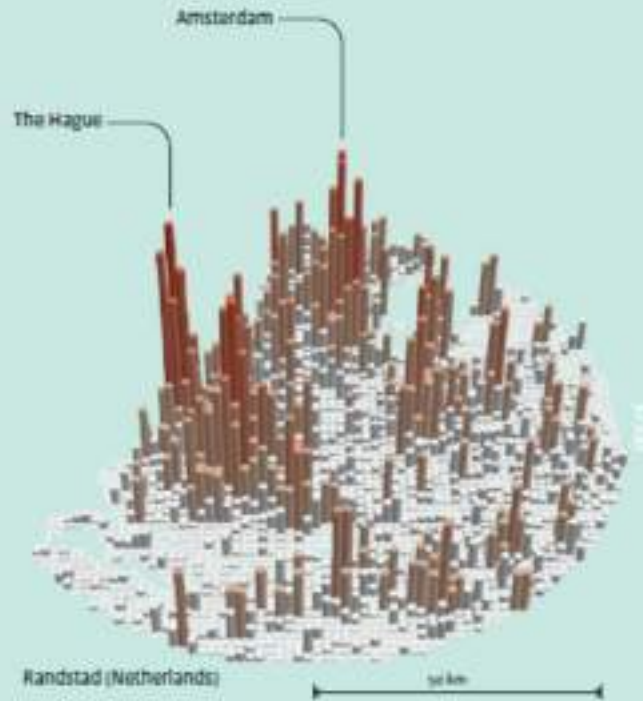
- | | | |
|---|---|---|
|  |  |  |
| Public Transport | Through Traffic | Heavy Traffic |
|  |  |  |
| Emergency Vehicles | Deliveries | Local car Access |
|  |  |  |
| Pedestrian | Cyclists | Parking Garages |



70 hectares
80% Residential – 20% Commercial
11-14,000 Dwellings
26-32,000 Population
280-350,000 sq m Commercial
4-12 Storeys
160-200 residences/hectare

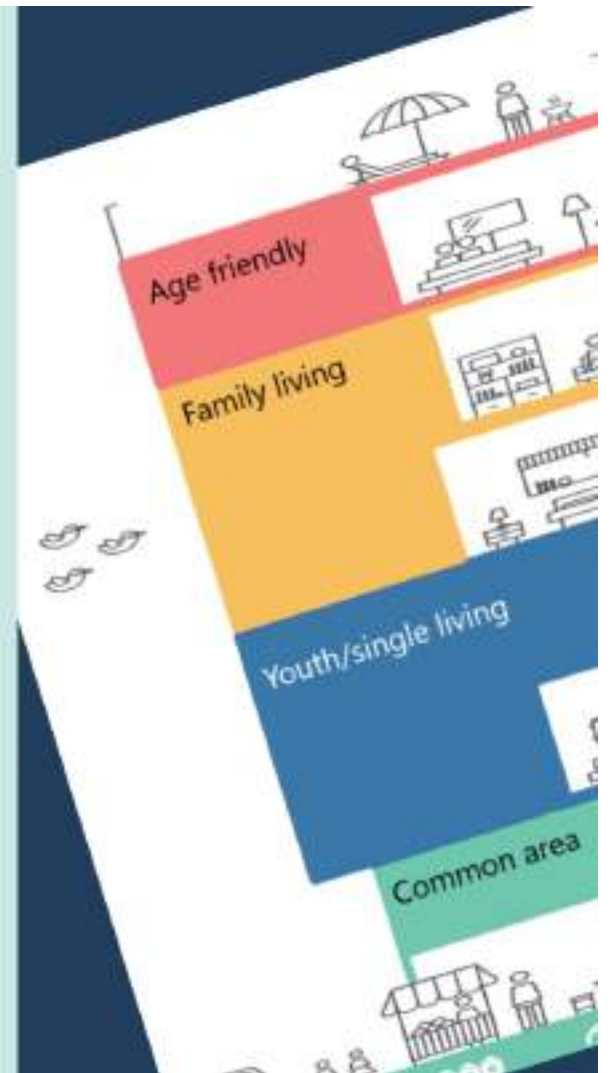






Polycentric urban region

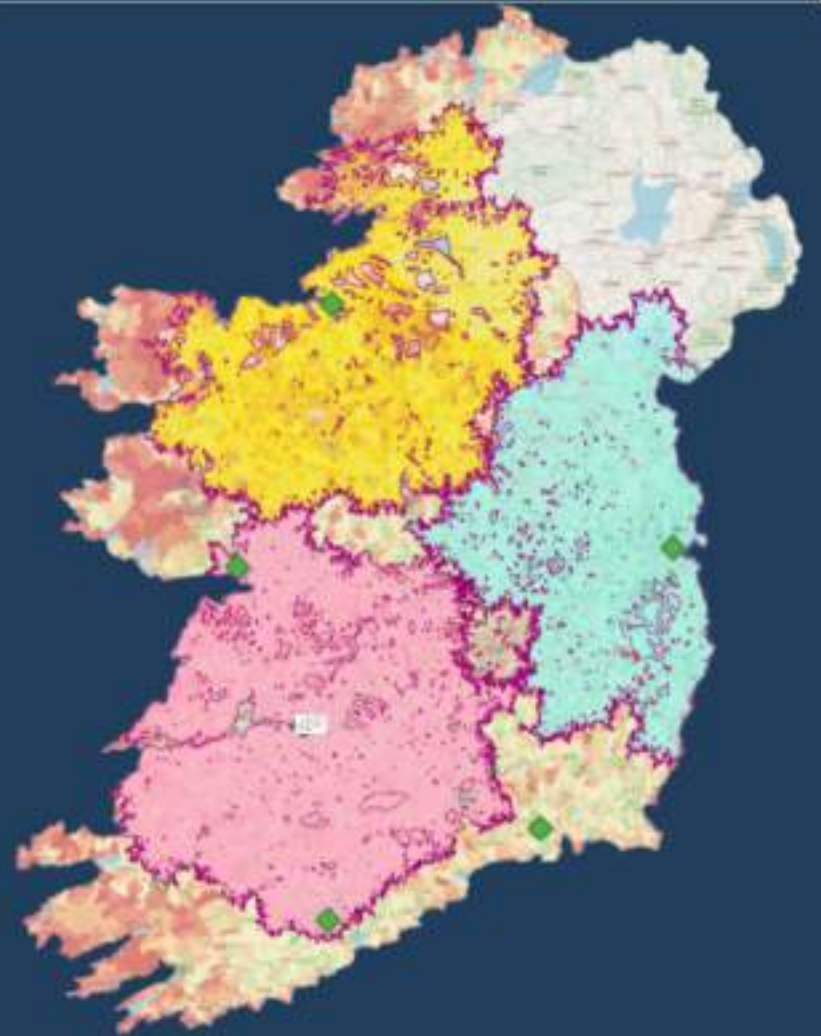
In polycentric urban regions, multiple cities lie in close proximity to one another. These kinds of regions can be found in the Netherlands, the western part of Germany and the southern half of the United Kingdom.

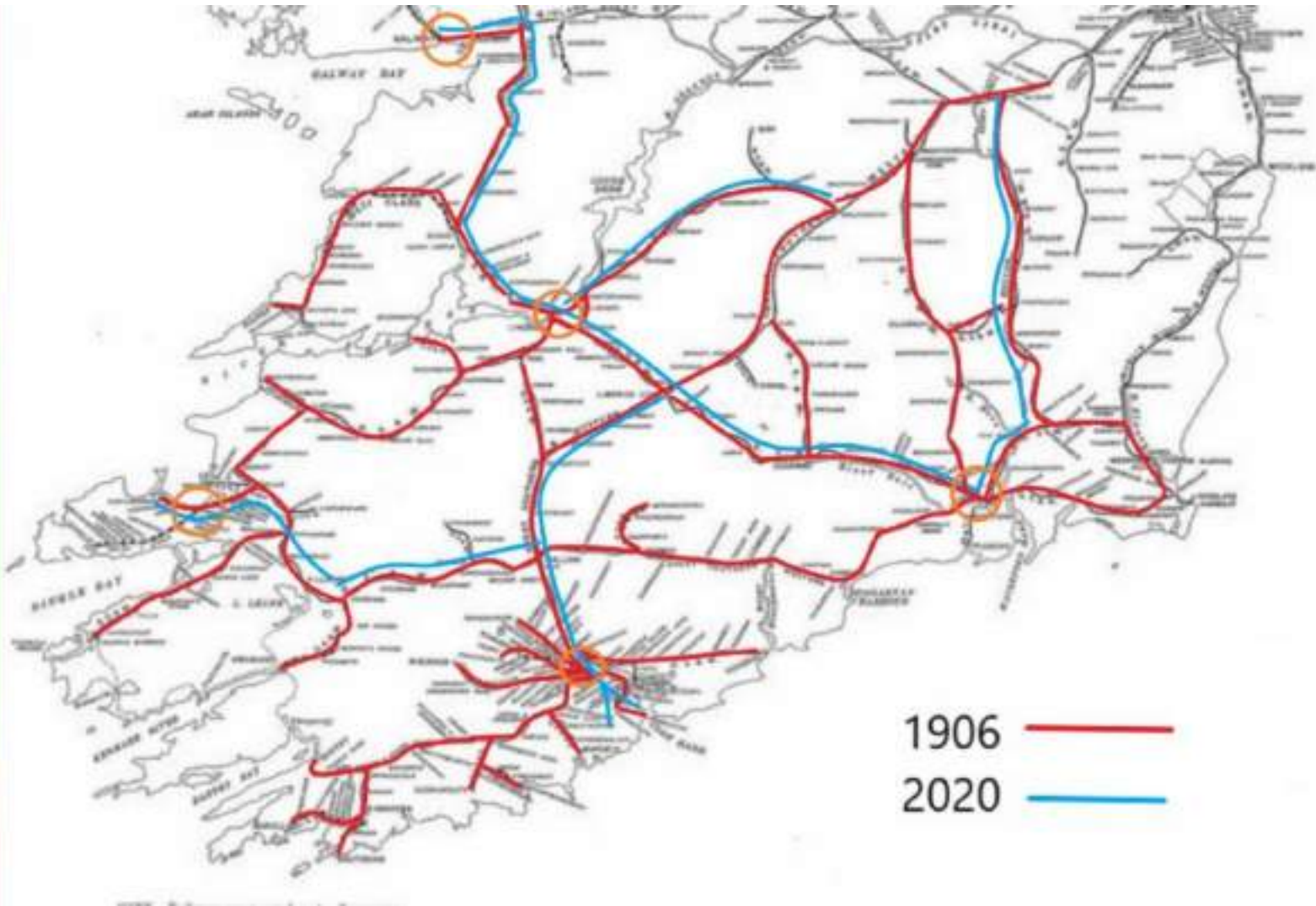




Polycentric...

- Regional cities working together to achieve PI 2040 growth
- Population of 1.3m+
- Urban living (Reverse doughnut effect)
- Superior city connections
- Limerick as COE for healthcare?
- Galway for media?
- Cork for education?
- Waterford for science?





Where next for Ireland's cities and towns?

John A Moran

Regional
Collaboration...

A new way
of planning...

Setting the
scene...

A culture
change...

21st Century
City...

RHH
INTERNATIONAL

**EUROPEAN
EXPO 2020**



Medieval



Georgian







Education



Industry





The future....





Thank-you for your
attention

John A Moran

Email: John.Moran@rhh.ie

**EUROPEAN
EXPO 2020**
EUROPE IN LIMERICK

RHH
INTERNATIONAL

European Expo 2020 on LinkedIn
[@EExpo2020](#) on Twitter



Where next for Ireland's cities and towns? John A Moran

Regional
Collaboration...

A new way
of planning...

Setting the
scene...

A culture
change...

21st Century
City...

RHH
INTERNATIONAL

**EUROPEAN
EXPO 2020**